



PRODUCT HIGHLIGHT

CHECK OUT OUR NEW PRODUCTS!

CALL (320) 235-1940 TO ORDER

(320)-235-1940
info@ettermanenterprises.com
ettermanenterprises.com

December 2023

1913 West Highway
PO Box 1152
Willmar, MN 56201

FEATURED PRODUCT

BUTANE POWERED CORDLESS HEAT GUN

Nozzle rotates 90 degrees and adjusts into 5 separate position settings. Includes 1 shrink tube reflector. Multiple flames for impressive heat and air flow, butane flame stays within the nozzle and is not exposed giving you cordless flameless effective heat. Lasts up to 40 minutes.

PART #	Temp at Nozzle	Power	Qty.
7641000	650°F to 950°F	366 Watts Max	1

FEATURES

- Gas Control Knob
- Flame Guard Nozzle
- Ignition Button
- Ergonomic Soft Grip Handle
- Removable Stand
- Shrink Tube Reflector



*See Next Page for Butane fuel refill!

INDUSTRIAL HEAT GUNS

Great to use on plastic laminates, circuit boards, PVC, fiberglass or heat shrinkable materials. 1200°F Max Temp or Ambient heat settings. Comes with 6' cord, 14.5 AMPS.

PART #	DESCRIPTION	Qty.
HG751B	Master Heat Gun	1
A-160-HG	Shrink Tubing Attachment	1
51013	Molded Carrying Case	1

FEATURES

- Replaceable carbon brushes.
- Great to use on plastic laminates, circuit boards, PVC, fiberglass or heat shrinkable materials.



PROPANE TORCH

PART #	DESCRIPTION	Qty.
3000K	Butane Torch With Refill	1



PROPANE/MAPP TORCH

PART #	DESCRIPTION	Qty.
9814000	Propane or Mapp Torch	1

PROPANE/MAPP REFILL

PART #	DESCRIPTION	Qty.
TX9	Propane Refill	1/12
M1001	Mapp Refill	1



AEROQUIP MEDIUM PRESSURE TRUCK HOSE



PART #	Dash Size	Hose I.D.	Hose O.D.	Max. Working Pressure	Proof Test Pressure	Min. Burst Pressure	Min. Bend Radius
20694	-4	3/16	33/64	3000 PSI	6000 PSI	12000 PSI	3"
20695	-5	1/4	37/64	3000 PSI	5000 PSI	10000 PSI	3-3/8"
20696	-6	5/16	43/64	2250 PSI	4500 PSI	9000 PSI	4"
20698	-8	13/32	49/64	2000 PSI	4000 PSI	8000 PSI	4-5/8"
206910	-10	1/2	59/64	1750 PSI	3500 PSI	7000 PSI	5-1/2"
206912*	-12	5/8	1-5/64	1500 PSI	3000 PSI	6000 PSI	6-1/2"
206916*	-16	7/8	1-15/64	800 PSI	1600 PSI	3200 PSI	7-3/8"
206920*	-20	1"	1-1/2	625 PSI	1250 PSI	2500 PSI	9"

* 10' roll

FEATURES

- Aeroquip Style
- 2069 Truck Hose
- SAE 100R5
- SAE 31402 Table All
- 50' rolls
- Heavy Wall
- Single wire fabric cover.

REUSABLE STEEL MEDIUM PRESSURE NON-SKIVE HOSE FITTINGS



MALE PIPE

PART #	Size
2013129	#4 3/16 x 1/8
2013142	#4 3/16 x 1/4
2013272	#5 1/4 x 1/4
2013402	#6 5/16 x 1/4
2013415	#6 5/16 x 3/8
2013740	#8 13/32 x 3/8
2013753	#8 13/32 x 1/2
2013935	#10 1/2 x 1/2
2014065	#12 5/8 x 3/4
2014150	#12 5/8 x 1/2
2012856	#16 7/8 x 1"

FEMALE SWIVEL

PART #	Size
4N404	#4 3/16 x #4 SAE
5N605	#5 1/4 x #5 SAE
6N406	#6 5/16 x #6 SAE
8N408	#8 13/32 x #8 SAE
10N410	#10 1/2 x #10 SAE
12N312	#12 5/8 x #12 SAE
16N616	#16 7/8 x #16 JIC
2013532	#6 5/16 x #6 JIC
201353245*	#6 5/32 x #6 JIC
2013480*	#6 5/16 x #6 JIC
2013870*	#8 13/32 x #8 JIC

* 45° Swivel

90° ELBOW

PART #	Size
2013220	#4 3/16 x #4 SAE
2013350	#5 1/4 x #5 SAE
2013493	#6 5/16 x #6 SAE
2013571	#6 5/16 x #6 JIC
2013857	#8 13/32 x #8 SAE
2014039	#10 1/2 x #10 SAE
2014130	#12 5/8 x #12 SAE
2014260	#16 7/8 x #16 JIC

FEATURED PRODUCT

FEATURED PRODUCT

STAINLESS TEFLON MEDIUM PRESSURE TRUCK HOSE



PART #	Dash Size	Hose I.D.	Max. Working Pressure	Min. Burst Pressure	Min. Bend Radius
92000	-10	1/2	2000 PSI	8000 PSI	5"
920012	-12	5/8	1200 PSI	4800 PSI	6"



FEATURES

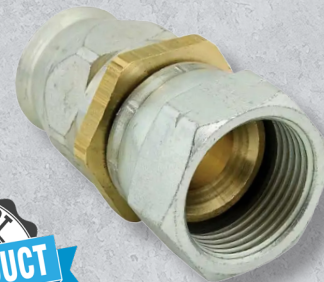
- Teflon tube, 304SS braided cover
- Compressor discharge lines
- 25' roll

REUSABLE STEEL MEDIUM PRESSURE NON-SKIVE HOSE FITTINGS

SWIVEL FEMALE

Non-Skive Hose Fitting.

PART #	Size
92002	#10 1/2 x #10 SAE
92005	#12 3/4 x #12 SAE



SWIVEL MALE

Non-Skive Hose Fitting.

PART #	Size
92001	#10 1/2 x 1/2



MICROTORCH



GT70



MT70



MT10



MT50

PART #	Temp	Height	Run Time
GT70	2500°F	6-1/2" tall	30 Min.
MT70	2500°F	5-1/2" tall	1 Hour
MT10	2500°F	4-3/8" tall	20 Min.
MT50	2500°F	6" tall	2 Hour



35319
Replacement Fuel Cell



ULTRATORCH

Self-Igniting, One Year Warranty. Various tips and accessories available.

*Kit consists of UT100SI heat tool, 70-40U carrying case, 70-01-55 heat shrink attachment, 70-01-02 protective cap, 70-35 ejector wrench and 80-40 wrench.

PART #	DESCRIPTION	Qty.
ULT200SIK	*Ultra Torch Heat Kit	1
UT100SI	Ultra Torch Heat Tool	1
51773	Approved Butane Fuel for all Master Torches	1
70-40U	Metal Carrying Case	1

FEATURES

- Flameless
- Light weight
- Built in piezo electric starter for instant ignition
- Over 2 hours operating time, environmental temperatures will influence operating time.
- Perfect for field service applications



51773 Butane Fuel

FEATURED PRODUCT

FEATURED PRODUCT

POW! PREMIUM HAND SCRUB

- No caustic alkaline ingredients, no solvents or acids.
- Removes oil, grease, glues, paint, ink and much more.
- Contains biodegradable materials, no phosphates.
- Heals cracked skin on hands.
- Concentrated, getting about 300 hand washes per pound.

PART #	Size
80664	4 oz
80665	64 oz
80666	Dispenser
80667	1- 64 oz + Dispenser



GREEN STUFF II

- Anti-septic, pumice free
- Conditions hands and cleans thoroughly
- Contains Lanolin
- Use with or without water
- Removes ink, paint, grime, oil, tar, adhesive, putty stains, graphite, carbon, shellac, varnish, grease and asphalt.
- Heavy-duty premium grade hand cleaner.

PART #	Size	Qty.
80636	12 oz	1/12



HAND CLEANER HOLDER

Wall mount wire basket holder for gallon sized hand cleaners.

PART #	Qty.
80643	1



HAND SANITIZER WIPES

- Combines sanitizing formula with an abrasive, nonscratching towel to dissolve and absorb germs, bofim and bacteria.
- Kills: Escherichia coli, salmonella cholerasuis, staphylococcus aureus, streptococcus pyogenes and more
- Contains 30 10" x 12" wipes

PART #	Qty.
35290985	1/6



HAND CLEANER TOWELS

- Pre-moisten, heavy duty towels with pumice
- Works quick to loosen, dissolve, and absorb dirt and grease
- Deep cleaning scrubbers remove embedded grime easily
- Conditions and soften hands
- Removes lubricants, tar, sealants, heavy grease, oil, wax, paints, adhesive, inks, caulk, epoxies and urethanes
- Contains 72 towels per container.

PART #	Qty.
80638	1/6



HAND CLEANER PUMP

- General purpose plastic pump or heavy duty stainless steel.
- For use with hand cleaner jugs.
- Stainless steel works better with thick solutions and will last much longer

PART #	Description	Qty.
80641	Plastic	1
80644	Steel	1



FEATURED PRODUCT